

5mm LVT Click Flooring

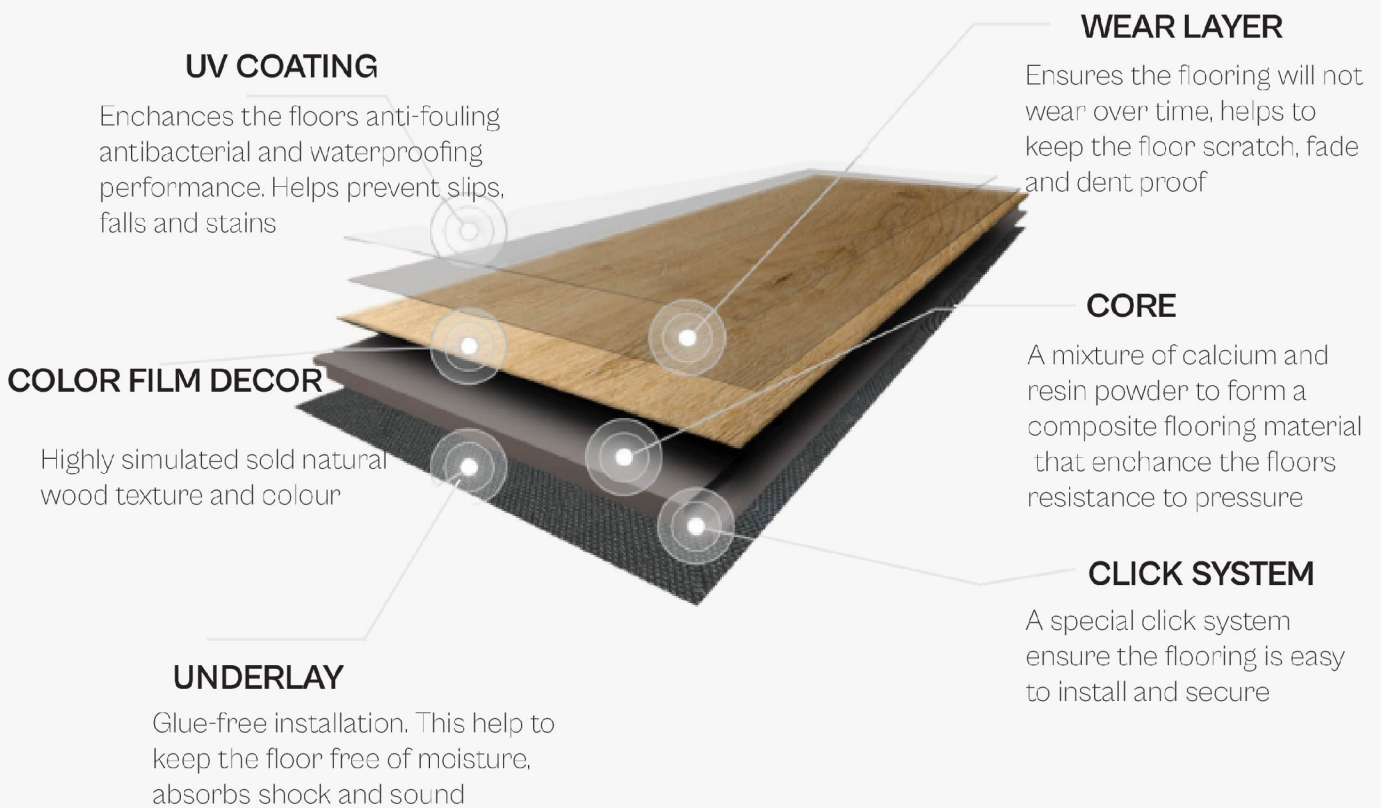


floor incTM

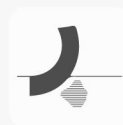
CYBERFLOR[®]
GUARDIAN OF FLOORING

Golden Star Collection

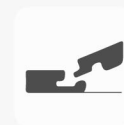
Structure of Vinyl Click



Flexible | Sturdy
Heavy Duty Use
Professional Glue Down Installation



Luxury Vinyl



Rigid Vinyl



Matte Coating

Features of LVT+ Flooring

Performance Highlights



Termite
Resistant



Stain
Resistant



Fade
Resistant



Scratch
Resistant



Click Lock
System



Realistic
Design



Soft
Underfoot



Wear
Resistant



Impact
Resistant



Easy to
Clean



Slip
Resistant



Water
Resistant



Durable



High density

Product Overview & Details

Dimension

5 x 228.6 x 1220 mm

Wear Layer

0.3 mm

Thickness

 5 mm

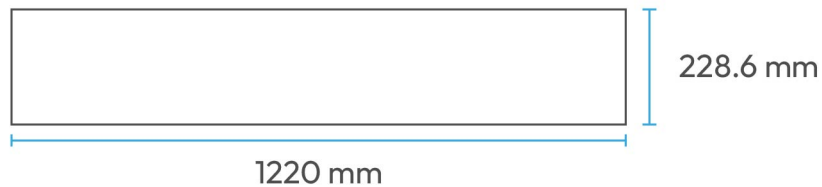
Packing

24.01 ft² / 8 panels / ctn

22.3 kg / ctn

52 boxes / pallet

Dimension



Alpine Oak
GS5001



Ivory Brushed Oak
GS5002



American Hickory
GS5003



Golden Hickory
GS5004



Pale Artisan Oak
GS5005



Field Oak
GS5006



Irish Hickory
GS5007



Dutch Limed Oak
GS5008

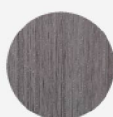


Vatican White Teak
GS5009

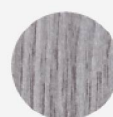


GS5001

PVC Skirting & Profile - Recommend Matching Colour



67 Hurricane Grey

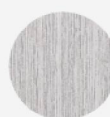


69 Koala Grey



GS5002

PVC Skirting & Profile – Recommend Matching Colour

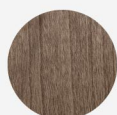


69 Koala Grey

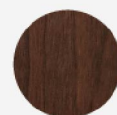


GS5003
(Duotone)

PVC Skirting & Profile – Recommend Matching Colour



37 Chateau Mocha

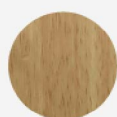


48 Balinese Walnut

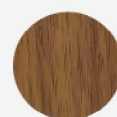


GS5004

PVC Skirting & Profile – Recommend Matching Colour



40 Natural Teak

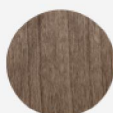


41 Burmese Teak

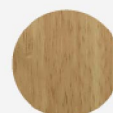


GS5005

PVC Skirting & Profile – Recommend Matching Colour



37 Chateau Mocha

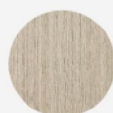


40 Natural Teak

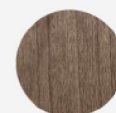


GS5006

PVC Skirting & Profile – Recommend Matching Colour



35 Wellesley Oak

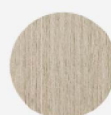


37 Chateau Mocha



GS5007
(Duotone)

PVC Skirting & Profile - Recommend Matching Colour

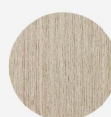


35 Wellesley Oak



GS5008

PVC Skirting & Profile - Recommend Matching Colour



35 Wellesley Oak

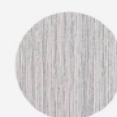


GS5009

PVC Skirting & Profile – Recommend Matching Colour

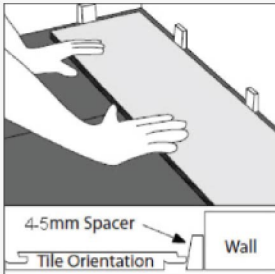


09 Angel White



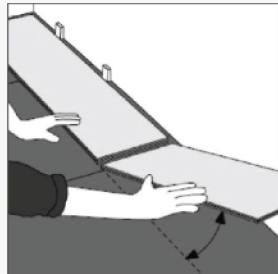
19 Avante Grey

Vinyl Click Installation



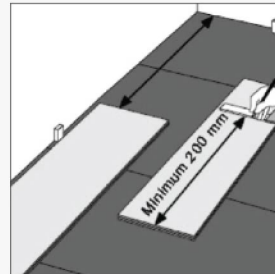
Step 1

Laying first plank in corner of room with tongue side facing wall using the thickness of the plank space size



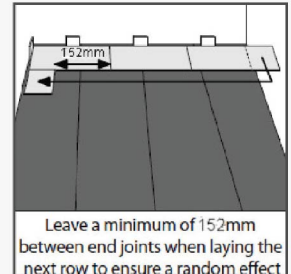
Step 2

Fitting of second plank



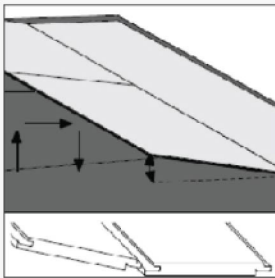
Step 3

Cutting and fitting of final plank in first row



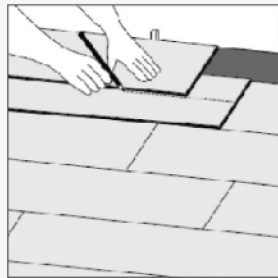
Step 4

Use of offcut from previous row (optimal)



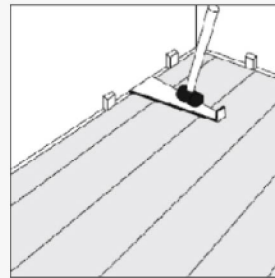
Step 5

Fitting of additional planks in second row



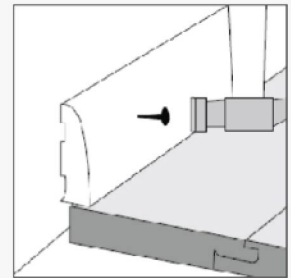
Step 6

Measure and cut final row of planks allowing for an expansion gap the thickness of the plank



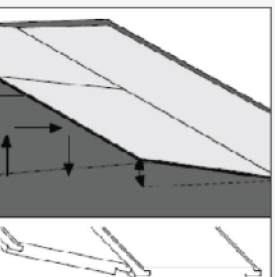
Step 7

Pull bar and rubber mallet can be used for final row of planks, ensuring an expansion gap is Minimum of 3/8" or thickness of the plank whatever is greater



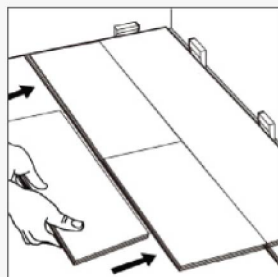
Step 8

Refitting of skirting board with hidden an expansion gap is Minimum of 3/8" or thickness of the plank whatever is greater.



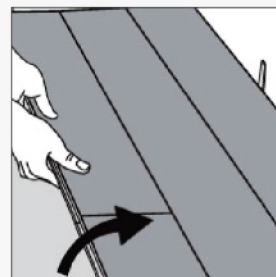
Step 9

Fixing edge trim to wall



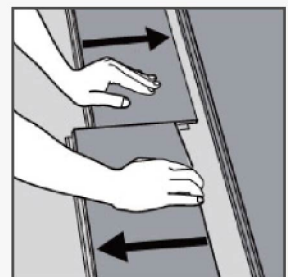
HELPFUL HINT

When installing each new row, take a full loose plank and use the long side to tap against the prior row to ensure no gapping.



DISASSEMBLING

Separate the whole row by lifting it up delicately at an angle. To separate the planks, leave them flat on the ground and slide them apart.



Product Specification

Dimensions : 228.6 x 1220 mm

Thickness : 5 mm

Wear Layer : 0.3 mm

Packaging : 8 panels / 24.01 ft²

Technical Data

Testing Items	Testing Method	Testing Result
Manufacturing Standard	EN 649	PASS
Total Thickness	EN 428	5.0mm
Thickness of Wear Layer	EN 429	0.3mm
Size tile (LxW)	EN 427	180mm x 1220mm
Surface Treatment	-	Glossy, semi-matte and matte
Peeling Strength of Layers	EN 431	PASS
Shear Forces of Layer	EN 432	GOOD
Sound, Impact, Reduction	EN ISO717-2	>4.8 dB
Fire Resistance	EN 13501-1	Bf1 - S1
Fumes Toxicity	EN 71-3	Complies
Dimension Stability	EN 434	<0.10%
After Exposure to Heat Colorfastness to Light	ISO 105-B02-3	ISO 105-B02-3
Static Indentation	EN 433	≤0.10mm
Flexibility	EN 435	PASS
Abrasion Resistance	EN 660	Class T
Castor Chair Resistance	EN 425	PASS
Slip Resistance	DIN 51130	R9
Anti-sliding Properties	EN 13893	CLASS DS
Usage Category	EN 385	21/34
Light Fastness	ISO 105-B02-3	>6
Formaldehyde Emission	EN 717-1	Class E1
Phthalates	CPSIA Section 108	PASS